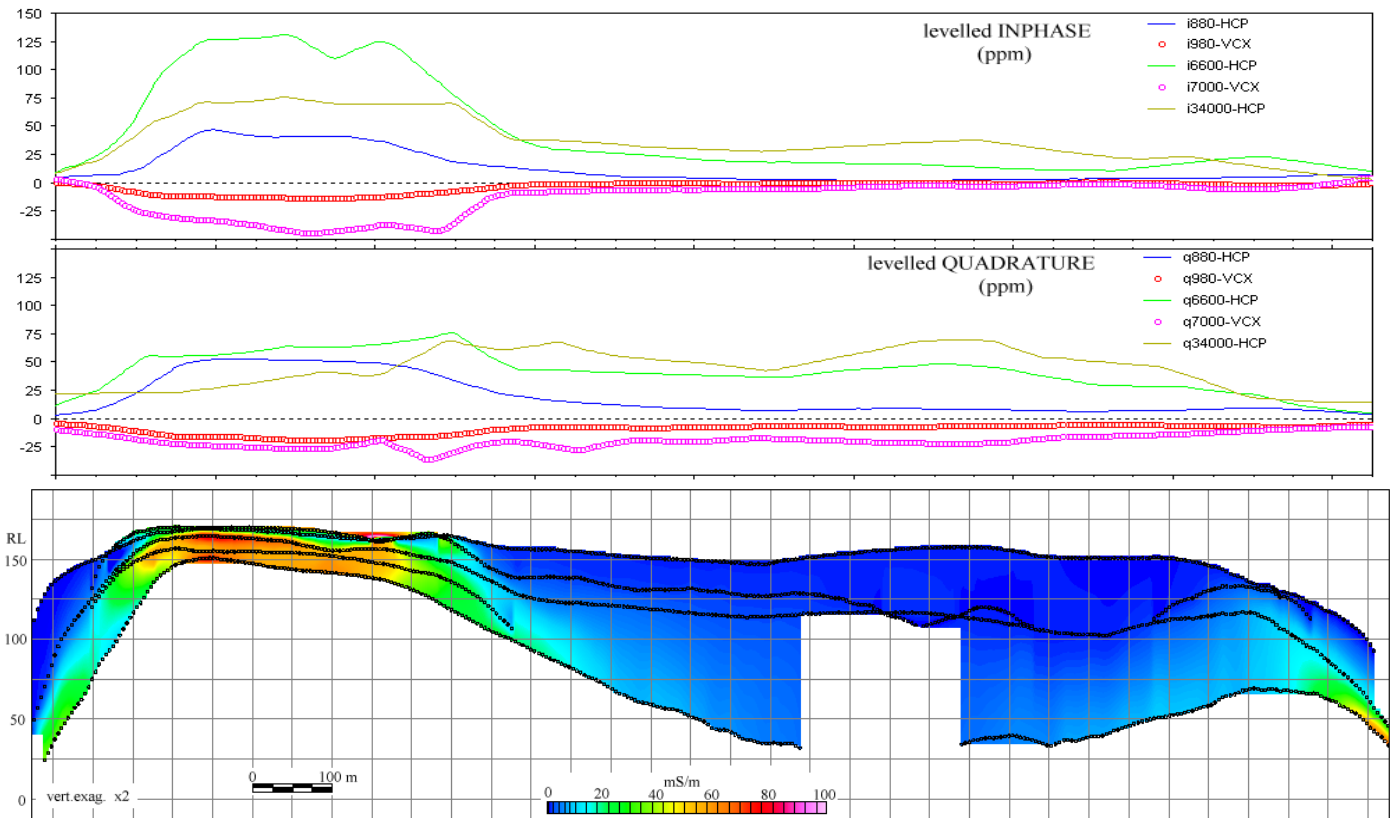
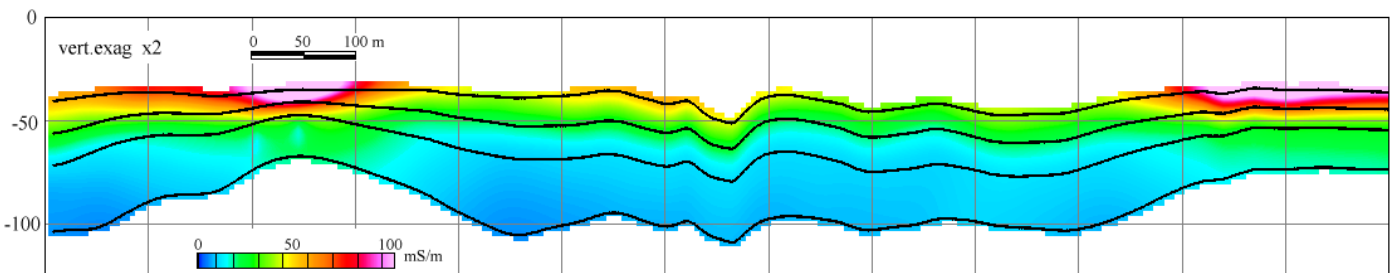


Epíel

- Sengpiel conductivity-depth transformation for helicopter electromagnetic data.
- handles any HEM system and any data normalisation; Hummingbird, Dighem, Geophex
- horizontal coplanar and vertical coaxial geometries
- generates inphase-quadrature apparent conductivity and Sengpiel depths suitable for display in pseudosection form using 3rd party software, for example Geosoft.
- useful HEM Q/C tool; check contractor resistivities. identify bad data and levelling problems.
- intuitive and simple to use; fast and robust
- suitable for first-pass interpretation.
- runs on IBM compatible PCs.



Hummingbird survey profiles and CDI, Balfour, Tasmania. WTRMP line D10012 (Mineral Resources Tasmania)



Geophex survey, Hammersley Basin, W.Australia.

For sales or more information contact :



Fullagar Geophysics Pty Ltd
45 Tahune Crescent,
Blackmans Bay,
Tasmania 7052
Australia

Peter Fullagar
telephone +61 (0)3 6229 5631
mobile +61 (0)447 511 015
e-mail fullagargeophysics@yahoo.com
web site www.fullagargeophysics.com